

PART OF THE S.E. 1/4, OF SECTION 32, T.7N., R.2W., S.L.B. & M.

WILMA JENKINS SUBDIVISION

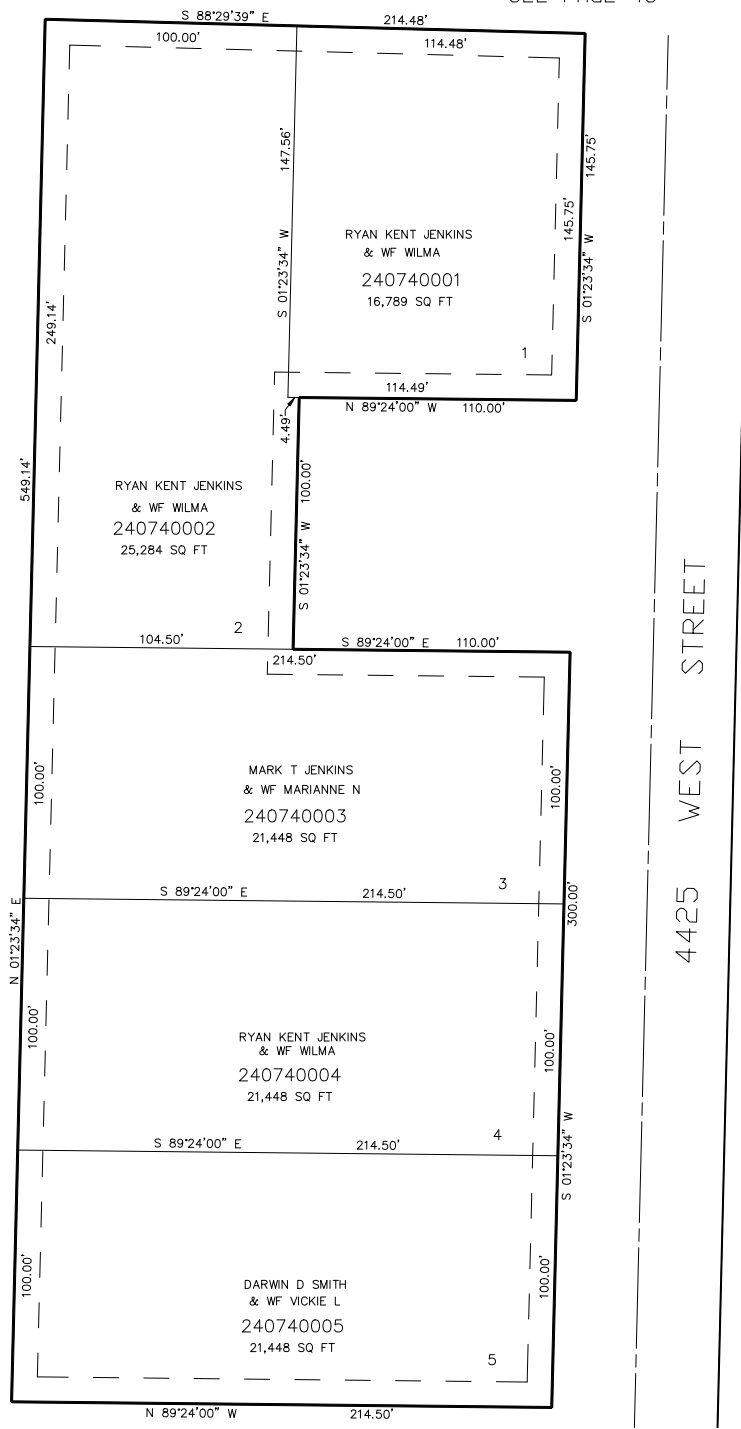
IN PLAIN CITY

SCALE 1" = 40'

TAXING UNIT: 21

1975 NORTH ST.

SEE PAGE 48



SEE PAGE 71

SEE PAGE 48

10' UTILITY & DRAINAGE EASEMENTS EACH SIDE OF PROPERTY LINES AS INDICATED BY DASHED LINES EXCEPT AS OTHERWISE SHOWN.

FOR COMPLETE ENG DATA SEE ORIGINAL DEDICATION PLAT IN BOOK 44, PAGE 75 OF RECORDS.

1900 NORTH ST.

SEE PAGE 48